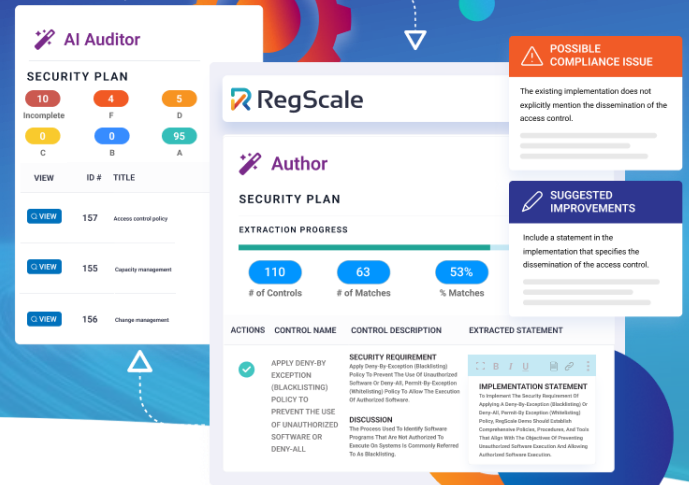


Compliance at the Speed of AI

Eliminate inefficient, manual processes and respond to regulatory changes and risks in real-time with RegML



RegML Reduces Risk & Enhances Security and Compliance

Save Time and Effort

- ✓ Eliminate inefficient and error-prone manual processes
- ✓ AI helps compliance novices become productive faster
- ✓ Import policies to automatically build your compliance program in hours instead of weeks or months

10x

Boost Staff
Productivity

80%

Increase in
accuracy

AI-Enhanced Outcomes

- ✓ Never be surprised by audit results again. RegML Auditor automatically finds potential weaknesses and suggests improvements
- ✓ Gain instant visibility into control gaps to increase transparency
- ✓ Reduce the time and resources needed to stay ahead of regulatory changes

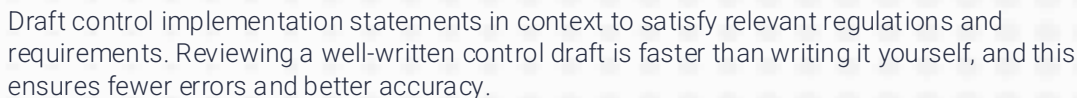
Quality Controls in the Blink of an Eye

- ✓ Create and refine comprehensive compliance programs from existing policies
- ✓ Get one-click AI-powered control assessments for completeness and effectiveness
- ✓ See suggested improvements for weak controls

92%

Less Time to
Create a New
Compliance
Program

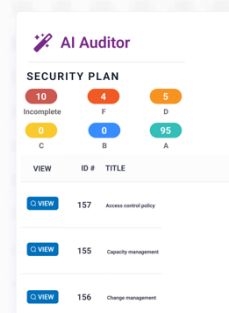
RegML Explainer effortlessly bridges knowledge gaps and provides clear explanations of intricate controls for implementing quality policies and collecting complete evidence tailored to the role and experience of the user.



Compliance documentation automatically derived from your existing policies and procedures. Get compliant faster, reuse documentation you already have, and let our AI generate the paperwork for you.

RegML provides higher quality control documentation for enhanced audit-readiness and confidence in your continuous monitoring and audit preparation requirements by quickly identifying gaps in controls and providing suggestions for precise improvements, freeing your team to focus on the important work - fixing gaps and implementing controls.

RegScale's RegML AI supercharges every phase of your control lifecycle with seamless data integrations, self-updating paperwork, and extreme automation. Stay always audit ready, reduce costs, and improve your security posture to prepare for a cloud-native and rapidly changing technology landscape.



Stay ahead of the rapidly changing tech world and alleviate skills shortages with RegML



RegScale embeds AI and automation into all aspects of the platform. Our AI-driven Continuous Controls Monitoring solution increases efficiency and productivity, improving both the quality and completeness of compliance programs in a fraction of the time.

Learn more about RegScale

